

INLINE CHECK REPLACEMENT INSTRUCTIONS



STEP 1

Turn the system off and make sure it's not running.



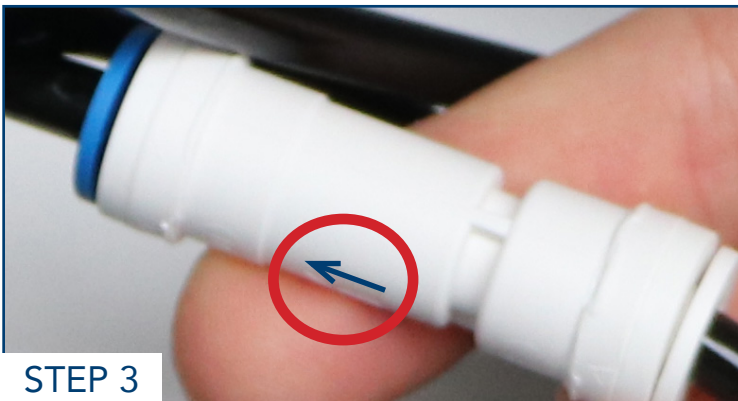
STEP 4

Turn the system back on once the inline check is replaced.



STEP 2

Disconnect the air lines from both ends of the push-to-connect, and remove the inline check.



STEP 3

Reconnect the inline check and make sure the arrow is pointing up.